

INDERR →

WE

INDERR ENGINEERING INDUSTRIES

BHOPAL

Welcome you

Factory Office Building



CAPABILITY

We have complete in-house manufacturing capability and assembly area to manufacture, test and deliver a quality product. Our machine shops are equipped with CNC machines (Turning & Milling), typical facilities like Broaching, Forming , Vacuum Annealing and Honing machines and Hydraulic Press .

Our design is equipped with CAD-CAM software for designing and quick prototyping of Metallic and Insulating parts for new equipments under development for fast analytical assessment of the functioning as per customer requirements

CAPABILITY

Software Capability:

<u>Sr. No.</u>	<u>Software</u>	<u>Manufacturers</u>	<u>License No.</u>	<u>Application</u>
1.	AutoCAD	By Auto Desk	3	General Drawing for Manufacturing.
2.	Solid Edge	By Software Siemens	SE289-Eng	➤ Solid Modeling ➤ Assembly ➤ Motion Analysis ➤ F.E.A. Single Comp.
3.	Power Shape	By Delcam	115963	Surfacing Complicated Shapes.
4.	Power Mill Pro 5X	By Delcam	115962	5 Axis Milling Software.
5.	Feature Cam	By Delcam	126635	4 Axis Turning, Milling Software

MACHINING CAPABILITY



CNC AREA 1

Sl. No.	Machine Detail	Photo	No. of Machine
1.	<p>Machine Name: CNC Universal Milling Machine Mono Block (5th Axis)</p> <p>Model: DMU65</p> <p>Make: DMG , GMBH</p> <p>Specification: Hiedenhain iTNC 530 controller</p> <p>Table Size : X735 x Y650 x Z560 mm with C Axis and B axis.</p> <p>Spindle Motor 14000 RPM spindle Power 18 kw, with RENISAW probing system(on line measuring device)</p> <p>30 magazine pockets</p>		1 no.

MACHINING CAPABILITY

Sl. No.	Machine Detail	Photo	No. of Machine
2.	<p>Machine Name: CNC Turn Mill with "Y" axis Model: NLX 2500/Y700 Make: DMG Mori Seiki Specification: Distance between center 700 mm Spindle RPM 4000/ minute-1 "Y" axis +/- 50 mm work Bar capacity : Ø80 mm Turret : 12 Station</p>		1 no.
3.	<p>Machine Name: CNC WIRE ELECTRICAL DISCHARGE M/C Model: G 53 S Make: Chmer, Taiwan Specification: Space X TRAVEL 825MM, Y TRAVEL 600MM ,Z = 215 MM (machine working area X 500x Y 300 x Z 215)</p>		1 no.


MACHINING CAPABILITY






CNC AREA 2

Sl. No.	Machine Detail	Photo	No. of Machine
4.	<p>Machine Name: CNC VERTICAL MACHINING CENTRE TYPE 835V Model: DMC 835 V Make: DMG , GMBH Specification: Siemens 840D Controller, Table Size : 835 X 560 X 510 mm Spindle Motor 10000 RPM, Spindle Power 11 KW with BLUM probing system(on line measuring device) 20 magazine pockets Safe wt. on Table : 800 kgs.</p>		1 no.



MACHINING CAPABILITY

Sl. No.	Machine Detail	Photo	No. of Machine
5.	<p>Machine Name: CNC VERTICAL MACHINING CENTRE TYPE 835V</p> <p>Model: DMC 835 V</p> <p>Make: DMG , GMBH</p> <p>Specification: Siemens 840D Controller, Table Size : 835 X 560 X 510 mm Spindle Motor 10000 RPM, Spindle Power 11 KW with BLUM probing system(on line measuring device) 20 magazine pockets Safe wt. on Table : 800 kgs.</p>		1 no.
6.	<p>Machine Name: CNC Turning & Milling Center Type V3 ECO</p> <p>Model: CTX 310 ECO</p> <p>Make: DMG , GMBH</p> <p>Specification: Variable speed 7.5KW/11KW 30degree Slant saddle Bed, working X = Ø260 mm, X = 450 long.</p>		1 no.

MACHINING CAPABILITY

Sl. No.	Machine Detail	Photo	No. of Machine
7.	<p>Machine Name: Hardness Tester</p> <p>Model: 2011/105</p> <p>Make: Balancing instruments & equipments.</p> <p>Specification: 1kg load to250 kg.</p>		1 no.
8.	<p>Machine Name: Stored Energy Welding Machine</p> <p>Model: CDW 1</p> <p>Make: Artech Welder.</p> <p>Specification: 15 KVA (Capacitor Discharge) Microprocessor Control</p>		1 no.
10.	<p>Machine Name: Broaching Machine (Horizontal)</p> <p>Model: BR-1</p> <p>Make: Indore Hydraulics.</p> <p>Specification: Hydraulic Broach Length 1100 mm, 18 Ton (Pull & Push).</p>		1 NO.

STORAGE CAPABILITY

Sl. No.	Machine Detail	Photo	No. of Machine
11.	<p>Machine Name: Lean Lift Vertical Storage System</p> <p>Model: 2460-825 HS 31</p> <p>Make: Hanel, Germany</p> <p>Specification: Max Load 40000 Kg. in 12 Meters ht. with 60 Shelf per shelf weight 470 Kgs.</p>		1 no.
	<p>Machine Name: Lean Lift Vertical Storage System</p> <p>Model: 2060-825 HS51</p> <p>Make: Hanel, Germany</p> <p>Specification: Max Load 60000 Kg. in 12 Meters ht. with 60 Shelf per shelf weight 800 Kgs.</p>		1 no.

ASSEMBLY SHOP



ASSEMBLY SHOP

Women Empowerment



GLIMSES OF OUR TESTING AREA



CONFERENCE / MEETING ROOM



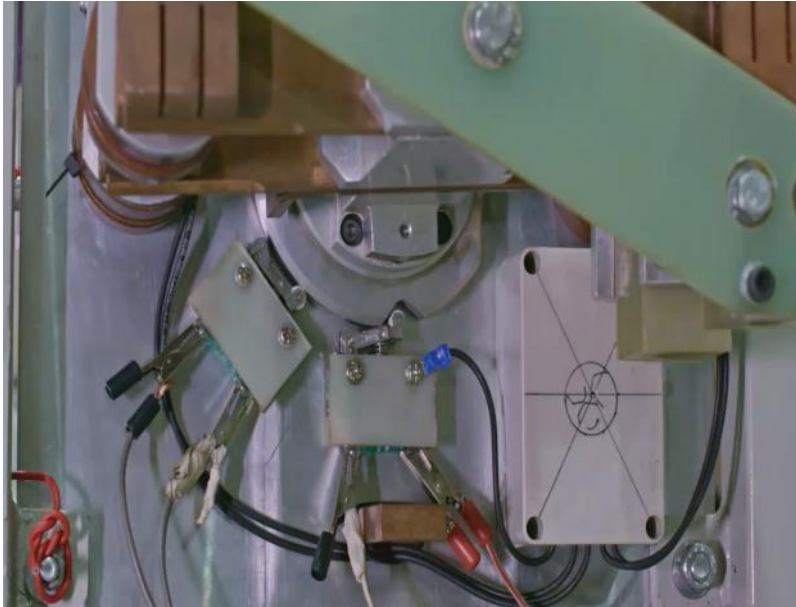
DESIGN AREA



CONTRACTOR TESTING



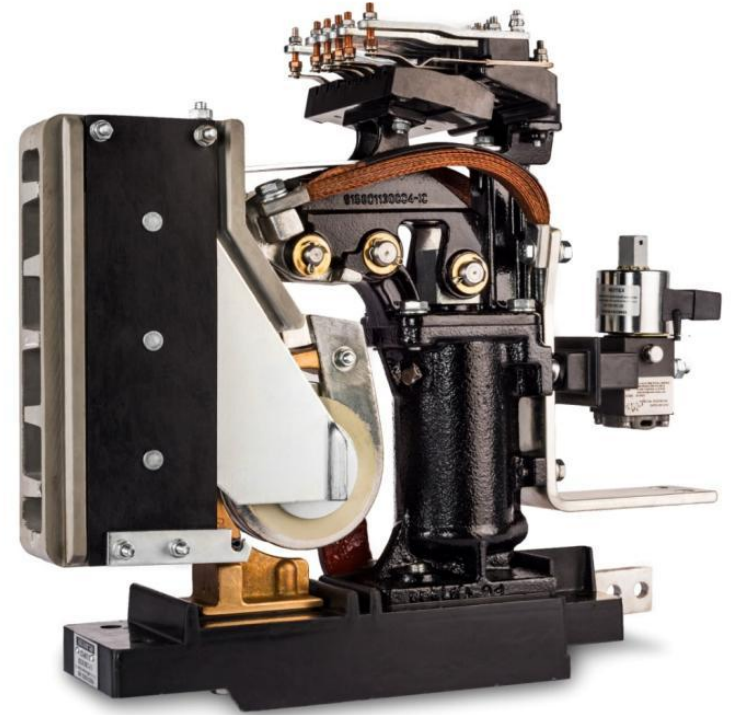
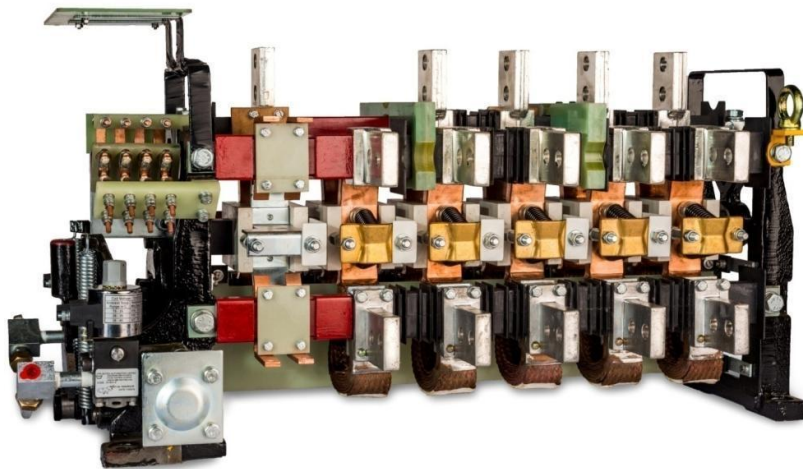
EARTHING SWITCH TESTING



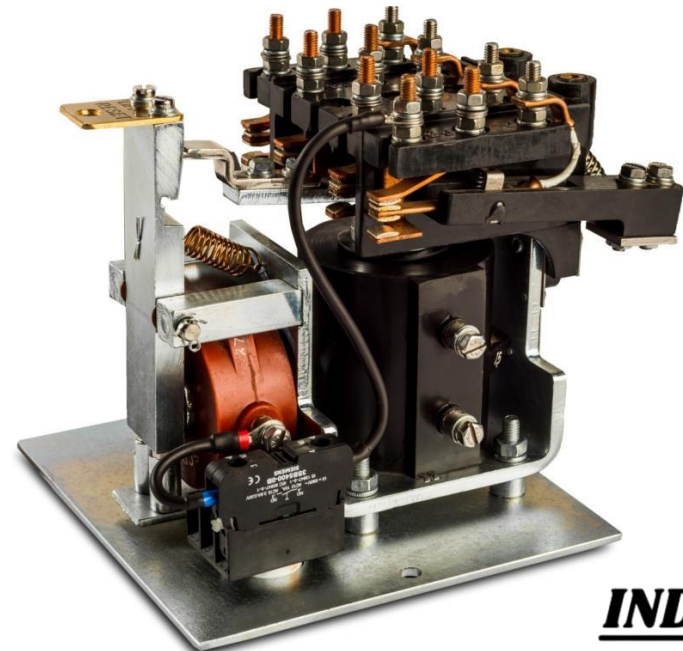
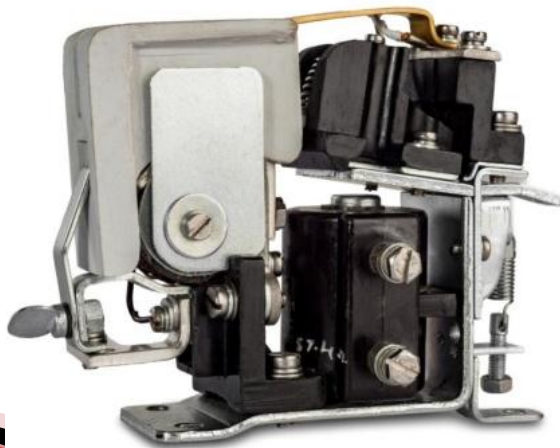
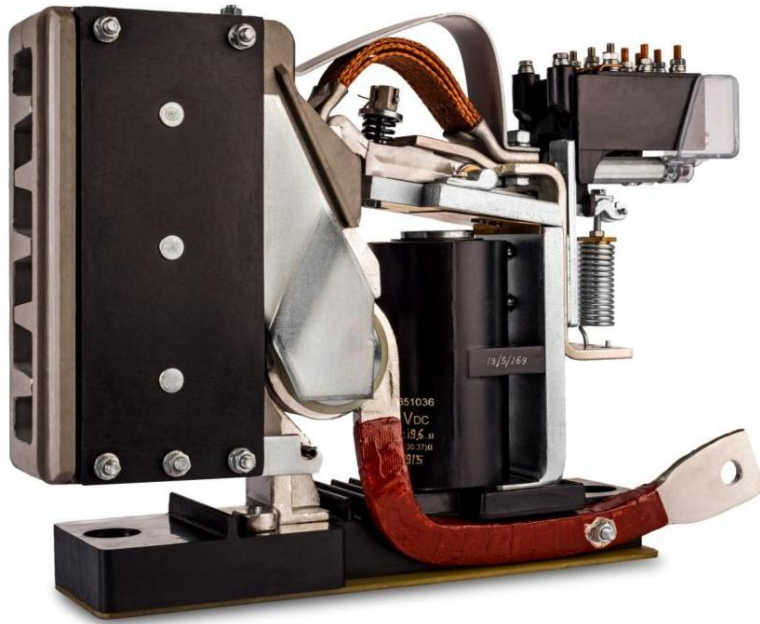
PLC PROGRAMMING AND WORKING



ELECTRO PNEUMATIC SYSTEMS



ELECTRO MAGNETIC SYSTEMS



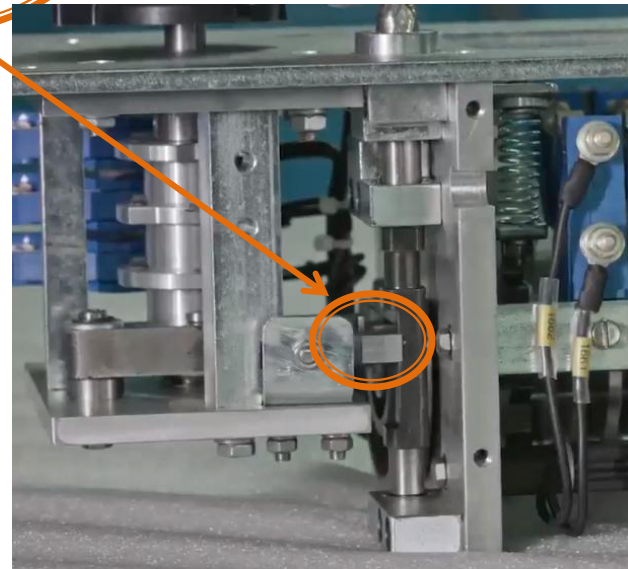
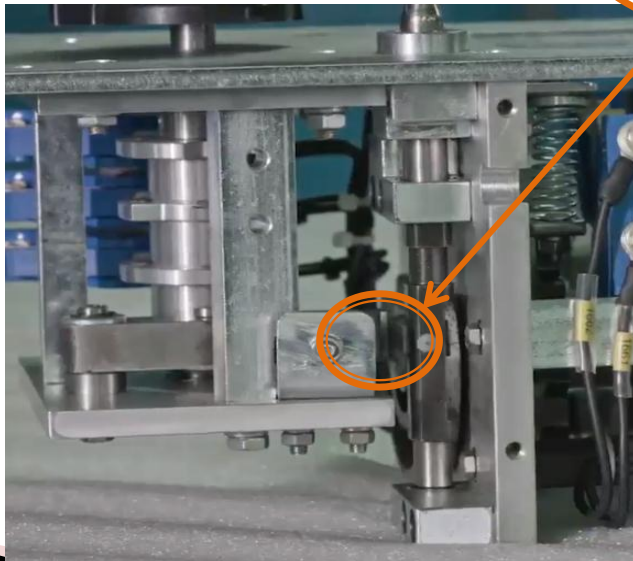
MECHANICAL MECHANISM



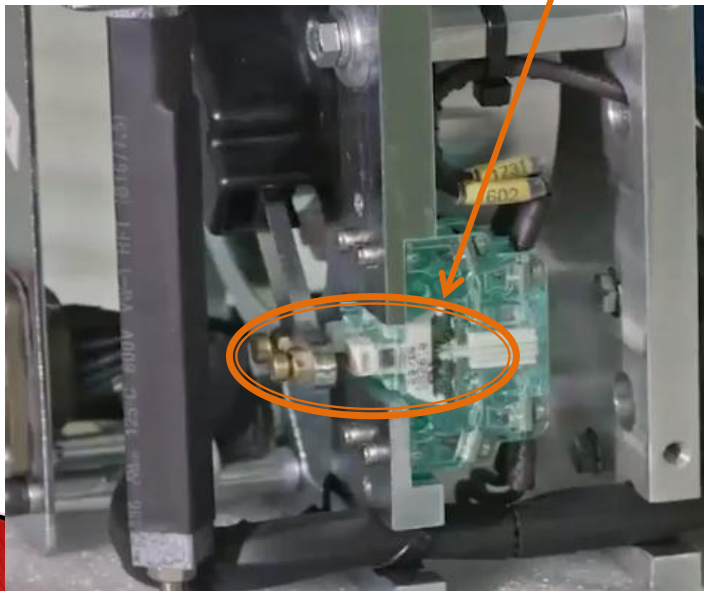
MECHANICAL MECHANISM (MASTER CONTROLLER)



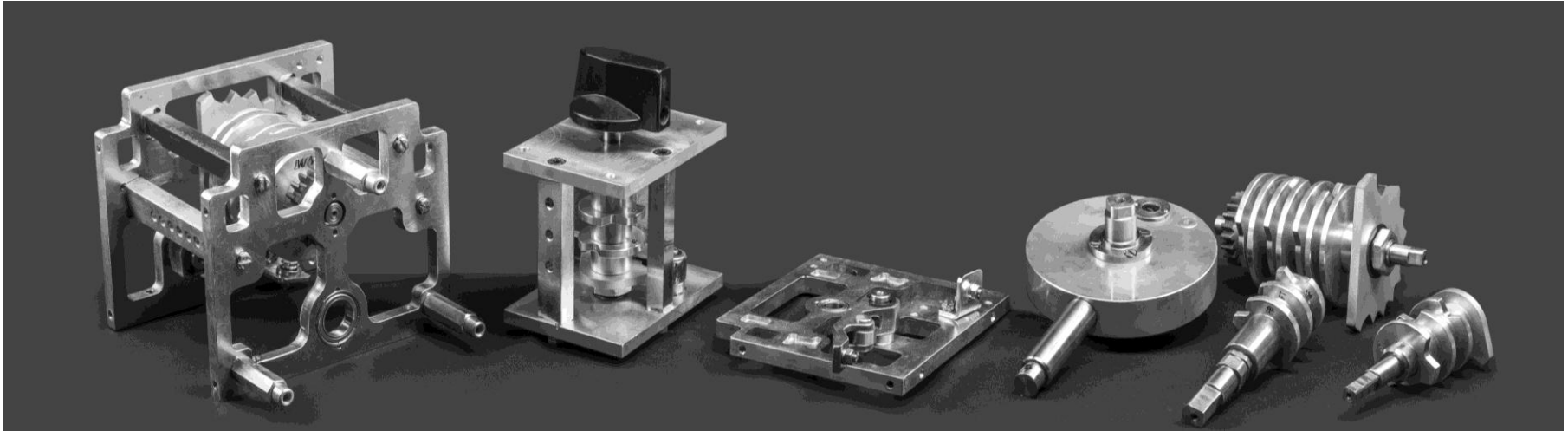
MECHANICAL MECHANISM



MECHANICAL MECHANISM



MACHINING & ASSEMBLY CAPABILITY



LED PANELS



SYSTEM SOLUTION

The DETC project was a joint venture between Inder Engineering Industries and CGL Mandideep. Inder scope in this project was to design, design approval from customer namely ICF Chennai, manufacturing of the system, customer clearance of system, testing and commissioning at ICF Chennai. Initial approvals were joint approvals which are attached for your reference.

The SPIC Project was second in line. This project was also executed the same way except CGL wanted independent approval for drawings from ICF Chennai and for which we agreed.

The appreciation letter for SPIC project from the CGL is also enclosed for your reference.

DETC DRIVER DESK



SPIC DRIVER DESK



DETC CC1, CC2 & MSGC



SPIC CC1, CC2 & MSGC



OUR INSTALLATION COMMISSIONING TEAM AT ICF CHENNAI



CGL APPRECIATION FOR SPIC

CG Power and Industrial Solutions Limited
(Formerly Crompton Greaves Limited)
Large & Traction Machines Division: Industrial Systems

CG, Industrial Area MPKVN, Mandlaap 482 046, Bhopal, Madhya Pradesh, India
T: +91 7466 400 000 F: +91 7460 403 319



M7/AL/IE/01

20th Dec 2018

Thank You!!!

This appreciation letter is issued to express our special gratitude to

M/s Inder Engineering Industries

Plot No. 12, Sector-F, Govindpura, Bhopal

in recognition to the exemplary performance displayed for during execution of SPIC (Self Propelled Inspection Car).



The exceptional efforts taken by your team towards timely completion of design and development activities, maintaining desired quality of work and adhering to the stringent delivery schedules has helped us in rolling out the first ever Self Propelled Inspection Car from Integral Coach Factory, Chennai in a record span of 11 weeks from the date of PO placement.

You have truly made a difference!!!

We at CG have always cherished and acknowledged our association with the valued suppliers and look forward to your continued support for our current and future endeavours.

Thank you once again.

Sincerely,

Dinesh Nimje
General Manager
Traction Machines & Systems

THANK YOU